

YOUR EXPERT IN ENGINE CONTROL

11304 | 11305 | 11306 | 11311 | 11314 | 11316 | 11404

Without an optimal engine control, the internal combustion engine would not work. The complex interaction of crankshaft and camshaft must always, and at anytime, fit perfectly. If not, this can lead to major engine damage.

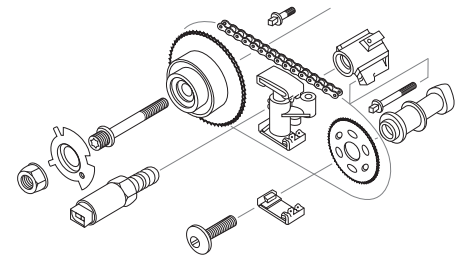
In the field of mechanical Engine Control, VAICO offers an ideal product range, including innovative repair solutions, Expert Kits +.

The core component is the timing chain. VAICO

timing chains are made of metal alloy and withstand any load. In addition to traction capacity and endurance strength, resistance to abrasion is one of the most important quality features of VAICO timing chains. The OE-quality timing chain kits from VAICO include all the parts needed for the repair: chain, guide and tensioner

Camshaft valves and adjusters improve engine idling and reduce fuel consumption as well as exhaust emissions. VAICO offers a comprehensive

range of control valves and adjusters in OE quality, which ensures a wide market coverage.



SYMPTOMS

- Rattling timing chain
- Irregular engine function
- Loss of performance
- Higher fuel consumption
- Engine check-light turns on



REASONS FOR FAILURE

- Dirt in the oil chambers and/or engine oil
- Thermal issues due to the engine overheating
- Contact issues
- Misaligned injection timing
- Defective camshaft adjuster or control valve



CONSEQUENTIAL DAMAGES

- Increased emissions
- Greater wear
- Rupture of the timing chain (engine damage)
- Reduction of engine performance (for EURO 5 and higher)



More than 1.000 articles within the engine control sector can be found at www.autoteile.de

- VAICO Timing chains **only in OE quality**
- **highest resistance to abrasion:** Chain pins with TRITAN® coating
- **100% performance and leakage test** of the control valves
- **Practical repair sets:** Timing chain, tensioner, guides, and gear in one kit.



YOUR EXPERT IN ENGINE CONTROL

11304 | 11305 | 11306 | 11311 | 11314 | 11316 | 11404

TIMING CHAIN KIT

NEW



| | |
|---------------|--|
| AUDI | A1, A3 |
| Seat | Alhambra, Altea, Ibiza, Leon |
| Škoda | Fabia, Octavia, Rapid, Yeti |
| VW | Golf V-VII, Passat, Touran |
| Info | Timing chain + Tensioner + 2 Guides |
| Engine | 1,4 TFSI |
| X-Ref | 03C 109 158 A kit 2 V10-10010-BEK |

CAMSHAFT ADJUSTER



| | |
|---------------|---------------------------------|
| AUDI | A1, A3 |
| Seat | Alhambra, Altea, Ibiza, Leon |
| Škoda | Fabia, Octavia, Rapid, Yeti |
| VW | Golf V-VII, Passat, Touran |
| Info | Intake Side, Hydraulic |
| Engine | 1,4 TFSI |
| X-Ref | 03C 109 088 E V10-4408 |

CONTROL VALVE, CAMSHAFT ADJUSTMENT



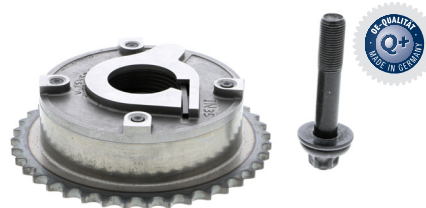
| | |
|---------------|---------------------------------|
| AUDI | A1, A3 |
| Seat | Alhambra, Altea, Ibiza, Leon |
| Škoda | Fabia, Octavia, Rapid, Yeti |
| VW | Golf V-VII, Passat, Touran |
| Info | with seal, 2-pole |
| Engine | 1,4 TFSI |
| X-Ref | 03C 906 455 A V10-3731 |

TIMING CHAIN KIT



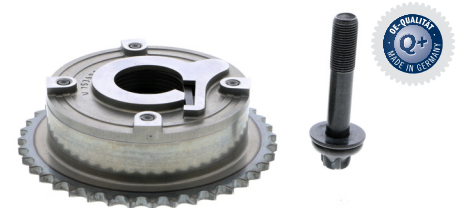
| | |
|---------------|---|
| AUDI | A3, A4, A5, Q3, TT |
| Seat | Alhambra, Altea, Exeo, Leon |
| Škoda | Octavia, Superb, Yeti |
| VW | Beetle, EOS, Golf VI, Passat, Sharan, Tiguan |
| Info | 3 Timing chains, 3 Tensioners, 6 Guides, Gear |
| Engine | 1,8 TFSI 2,0 TFSI |
| X-Ref | 06H 109 158 N kit* V10-10001 |

CAMSHAFT ADJUSTER



| | |
|---------------|-----------------------------------|
| BMW | F20, F21, F30, F31 |
| Mini | R55, R56, R57, R58, R59, R60, R61 |
| Info | Intake Side, Hydraulic |
| Engine | 1,4 1,6 |
| X-Ref | 11 36 7 545 862 V20-2988 |

CAMSHAFT ADJUSTER



| | |
|---------------|-----------------------------------|
| BMW | F20, F21, F30, F31 |
| Mini | R55, R56, R57, R58, R59, R60, R61 |
| Info | Outlet Side, Hydraulic |
| Engine | 1,4 1,6 |
| X-Ref | 11 36 7 536 085 V20-2989 |

Notes: Temporary offers are only valid while stocks last. All offers remain subject to prior sale. Our general terms and conditions of sale and delivery as well as our warranty conditions apply, which are available for download on our website. All prices are net prices. Errors excepted. Reference numbers of vehicle manufacturers are non-binding and no indication of origin. They may not be disclosed in invoices. © VIEROL AG