



## VARIABLE CAMSHAFT ADJUSTMENT

ENGINE CONTROL | 11314 | 11316

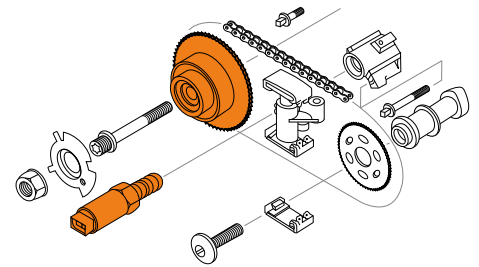
### Function

The variable camshaft adjustment means that engine idling is improved and the response of the engine is optimised. Fuel consumption and emission values are also reduced. This improves power delivery and therefore also results in enhanced performance. Depending on the engine design, it is possible to implement cylinder deactivation. Better internal cooling of the engine leads to less wear and tear. Depending on the engine, the adjustment may act as a form of internal exhaust gas recirculation and significantly reduce NO<sub>x</sub> values.

In the case of a short valve overlap in the full load range, the inlet valve closes very late. Subsequent inflow of fresh gases despite the piston moving upwards increases the boost effect of filling as well as the torque, which is particularly common indirect injection engines.

In the case of a longer valve overlap in the partial load range, the inlet valve closes earlier, briefly after being below dead centre. Fresh gases remain in the combustion chamber, whilst the combustion temperature and nitrogen oxide (NO<sub>x</sub>) falls.

Various designs are offered depending on the manufacturer. VAICO offers a comprehensive range on the market.



### SYMPTOMS

- Higher fuel consumption
- Loss of performance
- Irregular engine function
- Rattling timing chain
- Engine warning light flashes, engine fail-safe



### REASONS FOR FAILURE

- Dirt in the oil chambers
- Thermal issues due to the engine overheating
- Contact issues due to cable breakage or oxidation



### CONSEQUENTIAL DAMAGES

- Engine runs poorly
- Increased fuel consumption
- Thermal issues
- Poor emission values
- Greater wear and tear in the engine
- The timing chain tears (engine damage) depending on the design
- Locked engine warning light for EURO 5 and higher (reduction of engine performance)

### DESIGN OF A CONTROL VALVE

- 1 Quality O-rings and seals prevent early oil leaks and help maintain oil pressure.
- 2 Improved steel component limits bond as sludge is created.
- 3 100% quality assurance and end of line testing.



<b>BMW</b>	E90, E60, F10, E63, E65, F01, E84, F25
<b>Operating Mode</b>	Electric-hydraulic with seal
<b>Engine Type</b>	2.5 & 3.0 (N51-54)

X-Ref 11 36 7 585 425

**V20-2650**



Notes: Temporary offers are only valid while stocks last. All offers remain subject to prior sale. Our general terms and conditions of sale and delivery as well as our warranty conditions apply, which are available for download on our website. All prices are net prices. Errors excepted. Reference numbers of vehicle manufacturers are non-binding and no indication of origin. They may not be disclosed in invoices. © VIEROL AG

# VARIABLE CAMSHAFT ADJUSTMENT

ENGINE CONTROL | 11314 | 11316



<b>BMW</b>	E90, E60, F10, E63, E65, F01, E84, F25
<b>Operating Mode</b>	Electric-hydraulic with seal
<b>Info</b>	
<b>Engine Type</b>	2.5 & 3.0 (N51-54)
<b>X-Ref</b>	11 36 7 585 425
	<b>V20-2650</b>



<b>BMW</b>	F20/21, F30/31, R56-61
<b>Operating Mode</b>	Electric-hydraulic with seal
<b>Info</b>	
<b>Engine Type</b>	1.6 (N12-14)
<b>X-Ref</b>	11 36 8 610 388
	<b>V20-2761</b>



<b>BMW</b>	M5, M6
<b>Operating Mode</b>	Electric-hydraulic with seal
<b>Info</b>	
<b>Engine Type</b>	5.0 (S85)
<b>X-Ref</b>	11 36 7 841 072
	<b>V20-2135</b>



<b>Audi</b>	A1, A3
<b>VW</b>	Passat, Polo, Golf V
<b>Škoda</b>	Octavia
<b>Operating Mode</b>	Electric-hydraulic with seal
<b>Info</b>	
<b>Engine Type</b>	1.6 FSI, 1.4 TFSI
<b>X-Ref</b>	03C 906 455 A
	<b>V10-3731</b>



<b>Audi</b>	A3, A6, TT
<b>VW</b>	Golf V, Golf VI
<b>Škoda</b>	Octavia
<b>Operating Mode</b>	Electric-hydraulic with seal
<b>Info</b>	
<b>Engine Type</b>	2.0 TFSI
<b>X-Ref</b>	06F 109 257 C
	<b>V10-3728</b>



<b>Audi</b>	A1, A3
<b>VW</b>	Golf, Passat, Polo, Tiguan, Touran
<b>Škoda</b>	Octavia
<b>Operating Mode</b>	Hydraulic
<b>Fitting Position</b>	Intake Side
<b>Engine Type</b>	1.6 FSI, 1.4 TFSI
<b>X-Ref</b>	03C 109 088 E
	<b>V10-4408</b>



## CONTROL VALVES FOR VARIABLE CAMSHAFT ADJUSTMENT BY VAICO

More than 200 articles within the control valves for variable camshaft adjustment sector can be found at [www.autoteile.de](http://www.autoteile.de)

- largest range on the market
- many control valves/solenoids and variable camshaft adjustments are only available at VAICO
- 100% function testing in the production process ensures optimum quality

Notes: Temporary offers are only valid while stocks last. All offers remain subject to prior sale. Our general terms and conditions of sale and delivery as well as our warranty conditions apply, which are available for download on our website. All prices are net prices. Errors excepted. Reference numbers of vehicle manufacturers are non-binding and no indication of origin. They may not be disclosed in invoices. © VIEROL AG